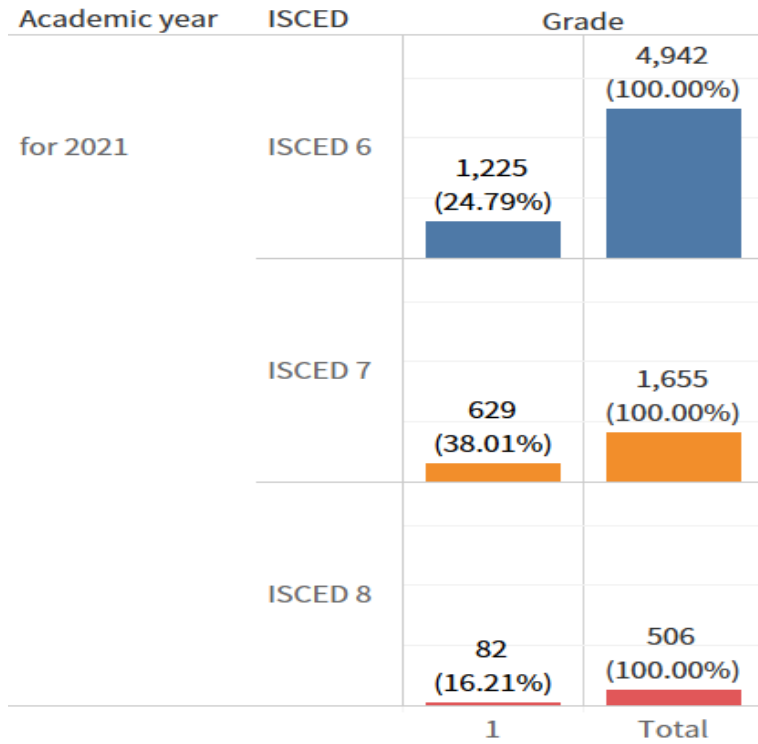


# SDG10

## 10.2.1

### Number of students starting a degree.

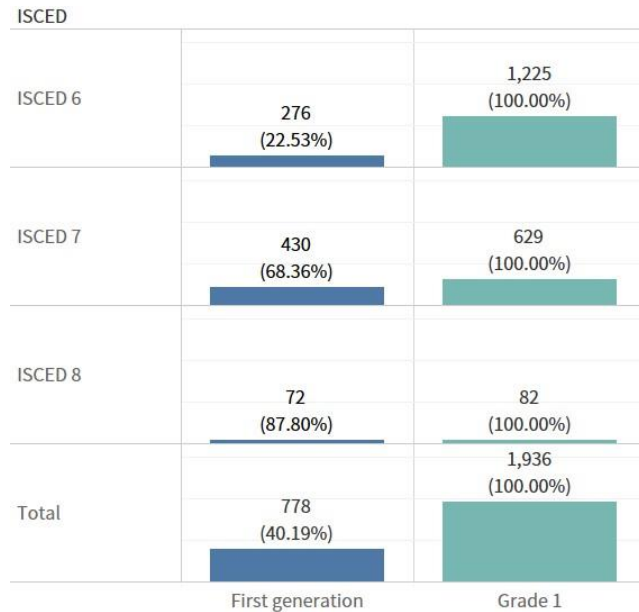
Number of students starting an FTE bachelor's degree in 2021: 1,225; Master's degree: 629; Doctoral degree: 82.



## Number of first-generation students starting a degree

### 1. Number of first-generation students starting a degree

Among the new students enrolled in the day-time courses in 2021, 778 were first-generation students starting a degree, accounting for 40.19% of the 1,936 students in total.



### 2. Improving the education guidance mechanism for students who are the first to attend university in three generations

To achieve the goal of equality of opportunity in education, and alleviate the unequal treatment faced by students due to disadvantaged economic or cultural backgrounds, the Higher Education Sprout Project of NCUE provides students “who are the first to attend university in three generations of their families” the opportunity to apply for various kinds of guidance with respect to their studies, lives, psychology, and careers. Since 2018, NCUE has guided more than 250 students who meet the criterion of “being the first to attend university in three generations of their families,” and issued nearly 2 million NTD of guidance rewards. NCUE subsidized 47, 15, and 4 students in the 2019, 2020, and 2021 academic years, respectively, helping them overcome short-term living difficulties by integrating the guidance resources of the university.

2.1 Learning guidance to identify the best students and assist the competent ones: Guided by the needs of students, teachers are responsible for leading and

designing customized and comprehensive guidance plans for students. Students who wish to continue their studies are provided with information on the Yang-ying Bachelor's and Master's combined degrees; To expand the knowledge and functional learning of students, NCUE has designed diversified learning projects for empowerment that train students using empowerment seminars and workshops such as interdisciplinary programs.

- 2.2 **Life guidance for studying with ease:** Students experiencing short-term hardships and economic difficulties are supported by measures such as tuition and miscellaneous fee reductions, as well as accommodation programs. They can also obtain resources such as emergency assistance, campus meal vouchers, scholarships, and grants after going through the guidance process.
- 2.3 **Accompanying and supporting students with psychological counseling:** Students in need of psychological counseling can receive individual and group counseling services, as well as participate in diversified mental health promotion activities (including seminars and workshops). The cases of students who need psychological counseling are recorded and tracked, so as to provide them with comprehensive psychological support and assistance, deepening the strategy of “precise counseling” and enhancing students’ resilience.
- 2.4 **Career counseling that facilitates employment:** Since 2022, NCUE has organized career development workshops and seminars to provide students in need of career orientation guidance with the relevant guidance resources. For those who need career counseling, we designed individual counseling which helps them to quickly and precisely master job-seeking skills for the future with one-on-one professional counseling.
- 2.5 **Student emergency aid:** To support students from economically-disadvantaged families that face emergencies (including students who are the first to attend university in three generations of their families) through hardship, NCUE provides emergency relief funds of approximately 100,000 NTD.

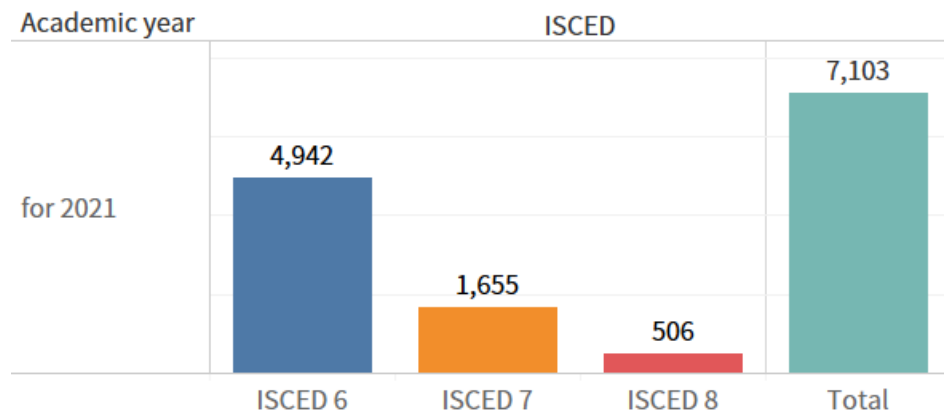
<https://alumni.ncue.edu.tw/p/405-1017-4685,c1366.php>



## 10.3.1

### Number of students

The total number of FTE students in 2021 was 7,103, including 4,942 Bachelor's students, 1,655 Master's students, and 506 Doctoral students.



### Number of international students from developing countries

#### 1. Number of international students from developing countries

A total of 295 students (including those from Hong Kong and Macao), who account for 4.15% of NCUE's student population, come from developing countries, such as Malaysia, Vietnam, and India.

Table: Percentage of Grade I international students from developing countries/regions in NCUE at 2021:

Program	Students from developing countries	Number of students	Percentage
Bachelor's program	227	4,942	4.59 %

Master's program	40	1,655	2.42 %
Doctoral program	28	506	5.53 %
Total	295	7,103	4.15 %

Statistics on the number of Grade I international students from developing countries/regions in NCUE in 2021:

Country	Year - 2021
Malaysia	132
China	127(including Hong Kong and Macao)
Vietnam	15
India	10
Indonesia	4
Mongolia	2
South Africa	2
Philippines	1
Pakistan	1
Iran	1
Total	295(including Hong Kong and Macao)

Record date set by MOE: Oct. 15, 2021

- NCUE provides financial support to students from developing countries in various ways, such as government, school, and non-governmental scholarships, epidemic prevention subsidies, and opportunities to participate in research projects and work-study in schools, as well as reduction of tuition, miscellaneous fees, and accommodation fee, so that students can be reassured to study in Taiwan. Moreover, despite the severe COVID-19 pandemic in 2021, NCUE still stay in touch with

teachers and students of partner universities in developing countries by various means, such as organising or participating in offline or online activities and publishing research papers in cooperation.

Table: Use of NCUE funds for financial aid projects supporting students from developing countries in 2021

Item	Service	Number of students served and the amount
Tuition and miscellaneous fee reduction for overseas Chinese students	Those who receive the aid can have their tuition and miscellaneous fees reduced by 1/3 in the fall and spring semesters.	30 students, 1,622,265 NTD
Key Points of NCUE's Implementation of Rewards for Foreign Students	Those who receive the rewards can be exempted from tuition, miscellaneous, and accommodation fees for one academic year.	25 students, 1,227.681 NTD
Installment arrangements for tuition and miscellaneous fees	Economically-disadvantaged overseas Chinese students and foreign students with proof can pay in three installments at most.	21 students, 824,147 NTD
Scholarships for outstanding	Including the Scholarship for Distinct Academic	5 students, 24,000 NTD

students	Performance, Scholarship for Outstanding Talent, and Scholarship for Service and Dedication		
Work-study student subsidies	The served students include students with disabilities, indigenous students, students eligible for the aid plan for disadvantaged students in colleges and universities (students from low-income households as well as low-to medium-income households, families in hardship, and children of persons with disabilities), students whose families are facing financial difficulties due to unexpected events, as well as economically-disadvantaged overseas Chinese students and foreign students.	28 students receive work-study student subsidies totaling 1,241,426 NTD (excluding 25 students from Hong Kong and Macao, 1,080,805 NTD)	
Graduate scholarships	Awarded to those with outstanding	Work-study subsidies: 18 people, 563,825	

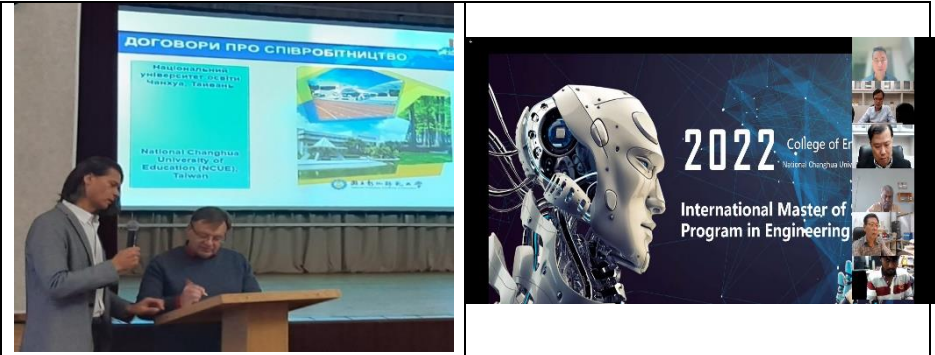
	performance in academic research.	NTD (excluding 12 students from Hong Kong and Macao, 356,704 NTD)
--	-----------------------------------	---

For the details of other forms of aid provided by agencies of the central government and civil organizations, please refer to [Annex 10.3.1A](#), Financial Assistance for Students from Developing Countries.

Please refer to [Annex 10.3.1A](#), Financial Assistance for Students from Developing Countries.

**3. Exchange activities between NCUE and institutions in developing countries**

**3.1 Academic and learning exchange activities:** NCUE has more than 220 partner universities around the world, among which 28 are located in underdeveloped and developing countries. Despite the continuously developing global COVID-19 pandemic, NCUE continues to communicate with its overseas partners online and offline through different plans such as teacher training, internships, program establishment, lectures, and academic conferences to enhance the international participation of teachers and students, and to support our partners with NCUE’s expertises and experiences in academic research and teaching. We have conducted such activities with partner universities in countries such as India, Indonesia, Vietnam, Ukraine, and Ghana.



NCUE International Office’s On December 24, 2021, the Deans



exchange and cooperation plan with 19 higher education institutions in Vietnam on October 29, 2021

of the International Office, the College of Science, and the College of Engineering of NCUE had a discussion with India's Karpagam Academy of Higher Education about the cooperation on MoU establishment, student exchange programs, and the academic exchanges and joint research projects conducted by both institutions.

**3.2 A series of multicultural activities:** NCUE regularly organizes a series of multicultural activities for students every year, such as the Lecture Series on Global Education and cultural experience workshops, ~~and~~ inviting foreign institutions in Taiwan, professionals, or foreigners to the campus to share their ideas on different cultural themes or to conducts practical activities to enable students to gain a better understanding of multiculturalism; the annual International Week and OCSA Week, which are held to facilitate the cultural exchanges between foreign and local students with a series of cultural lectures, workshops, exhibitions, stage shows, and school fairs; the Cultural Experience Tours conducted multiple times a year to show overseas students Taiwan's cultural attractions and lead them to delve more deeply into the communities to learn about their customs; ~~In the activities of the “Chinese Culture International Summer Camp,”~~ inviting overseas students ~~are invited~~ to Taiwan and participate in a series of courses involving the Chinese language, local culture, and crafts, and leading them to visit neighboring towns to gain first-hand experience about Taiwanese culture.



Every year, NCUE holds educational and cultural visits for overseas students, leading them to delve more deeply into communities to learn about their customs.

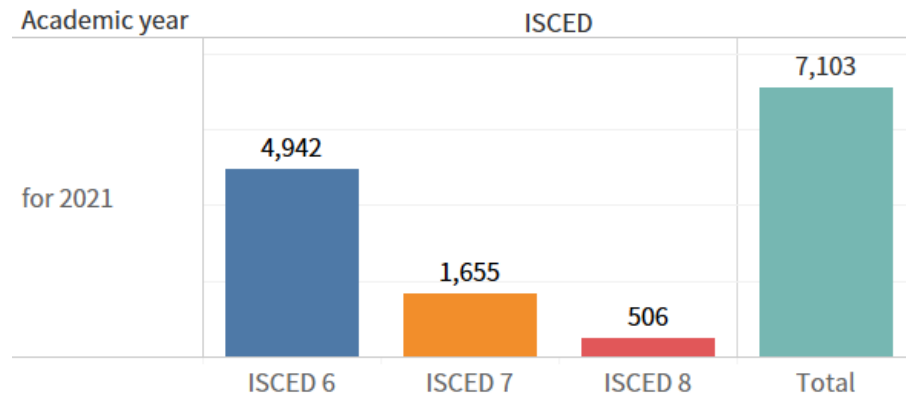
Spring festival parties are held for overseas students to share the lively vibe of the festival.

Please refer to [Annex 10.3.1B](#), Communication Activities with Developing Countries.

## 10.4.1

### Number of students

The total number of FTE students in 2021 was 7,103, including 4,942 Bachelor's students, 1,655 Master's students, and 506 doctoral students.



### Number of students with disability

There were 103 students with disabilities in 2021, and the proportion of students with disabilities was  $103/7103 = 1.45\%$ .

Educational system	Extremely severe	Severe	Moderate	Mild	None (no grade or other category was filled in by the student (determined by the Committee Responsible for the Identification and	Total

					Placement of Gifted and Disabled Students))	
Doctoral programme	1	0	1	1	0	3
Master's programme	0	0	7	11	4	22
Bachelor's programme	3	8	14	41	12	78
Total	4	8	22	53	16	103

NCUE provides students with disabilities with a fair chance of admission by applying to study in NCUE through multiple approaches. After they are admitted, they are also provided with comprehensive care on enrollment and studies (including coursework guidance, support in daily life, and transition guidance). By establishing an accessible environment on our campus and ensuring their dormitory accommodation, the individual's potential can be fully developed. Furthermore, the Ministry of Education has subsidized more than 2.39 million for NCUE to support students with disabilities with verification reports to adapt to university life. The details are as follows:

### **1. Providing students with disabilities with multiple admission channels**

#### **1.1 We are one of a few national universities to proactively pave the way for students with disabilities to enter into higher education: NCUE**

proactively paved the way for students with disabilities to enter into higher education by joining the National Joint University and College Admission System for Students with Disabilities. We admitted 10 students in this way in 2021. Since 2015, NCUE admits students with disabilities individually through a special system, and admitted seven students in this way in 2021. The system helps students with disabilities to enter a national university and pursue their dreams by majoring in their preferred disciplines.

1.2 To encourage departments to provide extra places for disadvantaged students, NCUE's *Measures of Establishing the Recruitment Strategy Committee and the Implementation* stipulates that each department can receive an additional operating fund calculated according to the number of extra places

(including those designated for overseas students, students with disabilities, and indigenous students) provided, amounting to 5,000 NTD multiplied by the actual number of students enrolled.

## 2. Supporting students with disabilities in their enrollment and studies

2.1 **The Resource Classroom provides comprehensive enrollment and study services for students with disabilities:** Various guidance and services that help students with disabilities adapt to university life are funded by the subsidies provided by the Ministry of Education, for which NCUE applies based on the *Work Plan of Recruiting and Guiding University and College Students with Disabilities*. The Ministry of Education subsidized more than 2.39 million NTD in 2021 to provide students with disabilities with appropriate services in counseling and assessment, and help them finish their studies successfully, with better adaptation to emotional issues, academic matters, society, and employment. We specifically arrange for these students to receive counseling during their studies, which includes general counseling, life counseling, and academic counseling. The support services include the following (please refer to <https://ncue7232105.wixsite.com/ncue/blank-4>):

Statistics of various services provided in the Resource Classroom	Students served (person-times)
Data query	129
Use of equipment	15
Printing coursework	304
Self-study	97
Exam service	4
Data transfer	7
Academic counseling	146
Life counseling	110
Transition counseling	58
General counseling	13
Other	139

Types of services provided by the Resource Classroom	Students served (person-times)
Coursework tutoring	120
Exam service	14
Study companion service	856
Equipment lending	23
Learning materials conversion	7

**2.2 Academic support services:** The Resource Classroom provides individual remedial teaching on difficult courses, exam services (explaining highlighted points, reviews of specific questions, etc.), learning material conversion, and learning equipment loans, while student helpers and volunteers are on site to help students with learning (adding/dropping courses, recording, explaining highlighted points, copying notes, etc.), and students can receive help with special education grant applications.

**2.2.1. Individual remedial teaching (difficult courses):**

The Resource Classroom arranges for students with disabilities to be individually taught by tutors on courses that are deemed difficult by them, such as psychological and educational tests, English, and statistics, helping them to catch up on coursework.

**2.2.2. Examination services (explaining highlighted points, reviews of specific questions, etc.):**

According to the types and degrees of disabilities of different students with disabilities, the Resource Classroom has designed a “Special examination service table” to provide appropriate help according to the needs of course teachers and students.

**2.2.3. Learning assistance by student helpers and volunteers (adding/dropping courses, recording, explaining highlighted points, copying notes, etc.):**

Student helpers and volunteers are arranged by the Resource Classroom to take shifts to help students add/drop courses, with recording, copying notes, and explaining highlighted points. Designated student helpers are also arranged to help students with disabilities search for information.

**D. Learning material conversion:**

Students receive help converting their textbooks into Braille or enlarged fonts, or convert written data to electronic files.

**E. Students can apply to use assistive equipment**

**F. Application for special education scholarships and grants (handled by the Office of Student Affairs) and application for external scholarships and grants**

**2.3 Life support services:** Regular orientation and mobility training are held to help students with disabilities familiarize themselves with the on-campus environment. Regular extracurricular activities, get-togethers, and teacher–student forums are held to allow students with special needs to get to know, understand, and support each other, while counseling teachers can exchange opinions with students and provide timely assistance. If the students face difficulties due to personal issues, they will be referred to the counseling center for psychological counseling (individual counseling and growth groups).

**2.3.1 Orientation and mobility training:**

The Taiwan Foundation for the Blind is usually invited to conduct orientation and mobility training to help blind students familiarize themselves with the campus environment as quickly as possible.

**2.3.2 Extracurricular activities and get-togethers:**

To allow students with special needs to get to know, understand, and support each other, the Resource Classroom hosts dinner parties, external visits, and experience sharing by alumni on civil service examinations or teacher selection exams for students at the beginning and end of each semester.

**2.3.3 Student forums:**

To promote the learning effectiveness of students in classes and to understand their progress, the Resource Classroom regularly holds forums for counseling teachers and students that allow counseling teachers to exchange opinions with students and provide timely assistance.

**2.3.4 Psychological counseling (individual counseling and growth groups):**

If students with disabilities face difficulties due to personal issues, the Resource Classroom will refer them to NCUE’s Psychological Counseling and Guidance Centre so that they can participate in individual counseling and growth groups.

**2.3.5 Arrangement of on-campus accommodation and transportation**

**2.3.6 Assistance to improve the accessible environment**

**2.4 Support services concerning transition counseling:** We provide student transition communication services, as well as graduate transition communication

and tracking services.

**2.4.1. Student transition communication services**

**2.4.2. Graduate transition communication and tracking services:**

Students (person-times) served by different types of services in 2021

Type of supporting services	Students served (person-times)
Help with learning	1,663
Life assistance	331
Career and transition services	67
Counseling	124

Statistics of supportive activities provided by the Resource Classroom to students with disabilities in 2021

Supporting activity	Students served (person-times)
Student Forum, the second semester of the 2020 academic year	42
Forum for Parents of Incoming Freshmen, the first semester of the 2021 academic year	25
Sharing Session by Alumni with Disabilities, the first semester of the 2021 academic year	16
University Career Preparation Group, the first semester of the 2021 academic year	40
Field trip and practices, the first semester of the 2021 academic year	17
Dinner Party and Gathering, the first semester of the 2021 academic year	17

**3. A campus environment with accessible facilities for students with disabilities**

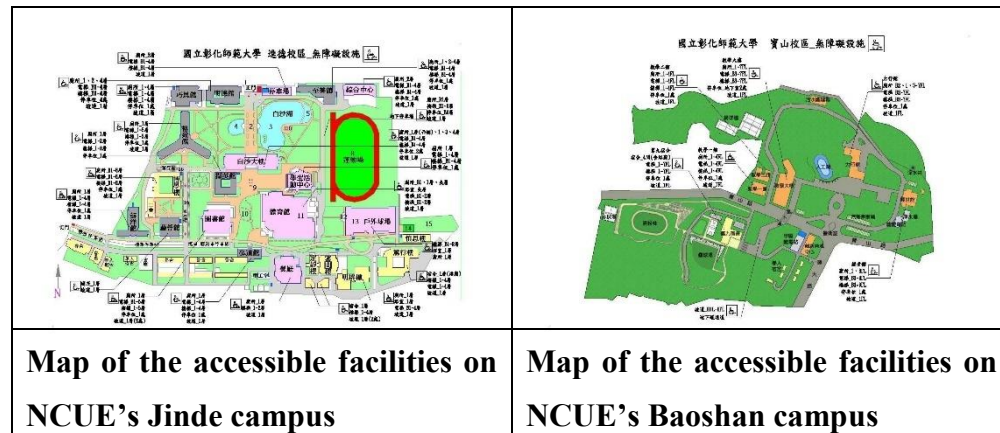
NCUE places considerable emphasis on building a campus environment with accessible facilities. The buildings and campus facilities are inspected and improved in accordance with accessibility regulations, while millions of NTD are spent annually to improve the accessible facilities. The total amount spent on the improvement of accessible facilities has reached 97.93 million NTD, providing consummate accessible facilities on campus. There are 23 major



buildings on the campus, each of which is equipped with accessible elevators and accessible toilets, with a 100% installation rate. All accessible ramps, guide facilities, and accessible stairway hand railings in the buildings are set according to accessibility regulations.

Table: Accessible facilities available on campus

Accessible Facility	Quantity	Installation Rate
Accessible elevator	23	100%
Accessible toilet	61	100%
Renovated accessible ramp	19	100%
Accessible stairway hand railings	36	100%
Guide facility	26	100%



#### 4. Priority accommodation for students with disabilities

There are seven dormitories on campus, with a maximum capacity of 3,300 students. Every year, NCUE guarantees that freshmen, students with disabilities, overseas Chinese and foreign students, government-funded students, students from outlying islands, students with outstanding athletic performance, disadvantaged indigenous students, and students from low- to middle-income families are given priority in the allocation of accommodation;

students from low-income families can live in the dormitory for free. The accommodation for the remaining students is allocated by lottery, and the accommodation rate is as high as 95%. Students with disabilities are entitled to discounts on tuition and miscellaneous fees, while their dormitory accommodation is guaranteed. They may be allocated to accessible dormitories according to their physical and mental conditions.

Table: Statistics on accommodation for students with disabilities in 2021

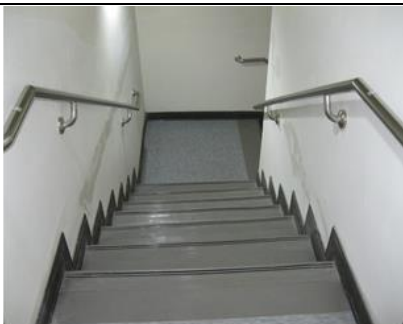
Dormitory	Number of rooms	Number of rooms allocated to students with disabilities
3rd dormitory	77	3
5th dormitory	90	4
6th dormitory	63	1
7th dormitory	140	3
8th dormitory	179	6
9th dormitory	151	6
10th dormitory	187	8



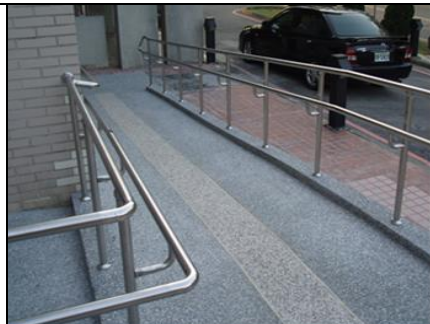
**Accessible facilities in dormitories**



**Accessible facilities in dormitory toilets**



**Accessible stairway hand railings**



**Accessible ramps**

### **5. Operating funds prepared for counseling for students with disabilities**

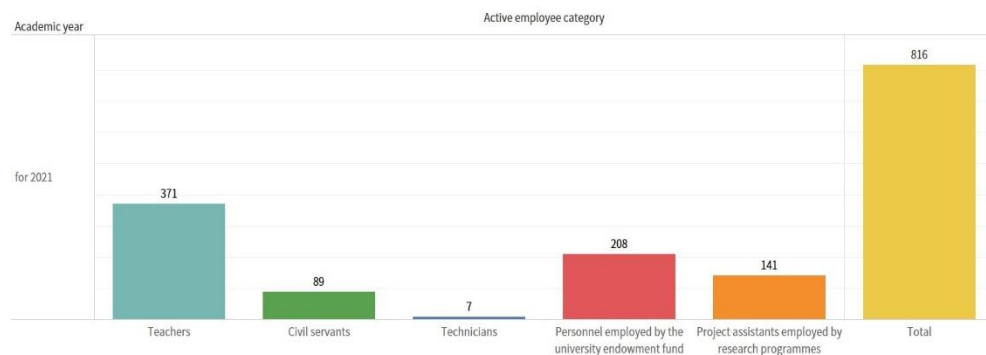
According to the *Fundamentals for Subsidizing Universities and Colleges on Recruiting and Counselling Students with Disabilities* issued by the Ministry of Education (<https://edu.law.moe.gov.tw/LawContent.aspx?id=FL026216>), NCUE applies for an annual subsidy from the Ministry of Education provided by the *Work Plan of Recruiting and Guiding University and College Students with Disabilities*, so as to provide various forms of counseling and services to students with disabilities. In 2021, the Ministry of Education subsidized more than 2.39 million NTD to help students with disabilities with verification reports adapt to university life, expand their networks, and increase their ability to study various courses, so that they can finish their studies successfully.

The funds are also used to provide support services that enhance their adaptation to emotional issues, academic matters, society, and employment.

## 10.5.1

### Number of employees

There were 816 active employees in 2021.



### Number of employees with disability

The number of employees with disabilities was 42 in 2021, and the proportion of employees with disabilities was  $42/816=5.15\%$ .

Active employee category	Mild to moderate disability	Severe disability	Number of people
Teachers	5	6	371
Civil servants	0	2	89
Technicians	0	0	7

<b>Personnel employed by the university endowment fund</b>	<b>15</b>	<b>4</b>	<b>208</b>
<b>Project assistants employed by research programmes</b>	<b>6</b>	<b>4</b>	<b>141</b>
<b>Total</b>	<b>26</b>	<b>16</b>	<b>816</b>

Having enacted the National Changhua University of Education Commitment of Sustainability, NCUE spares no effort to take care of employees with disabilities. To ensure inclusion and equity, NCUE abides by the rules stipulated by the *Employment Service Act*, *Gender Equity Education Act*, and *People with Disabilities Rights Protection Act*, ensures that no forms of discrimination or inequality due to race, belief, disability, and gender are allowed under the rules and regulations of the university, and ensures equal pay for faculty members. The number of employees with disabilities in NCUE conforms with the *People with Disabilities Rights Protection Act*. We continuously provide help in optimizing the work environment and prioritize accommodating employees with disabilities so that they can have a safe and secure work environment.

**1. Protecting the rights of people with disabilities in the workplace**

According to Article 38 of the *People with Disabilities Rights Protection Act*, any agency and school whose total number of employees is no less than 34 shall employ people with disabilities with the capability to work and the number of employees with disabilities shall be no less than 3% of the total number of employees. The total number of employees of NCUE in 2021 was 816, among which 42 are persons with disabilities. The number of employees with disabilities accounts for 5.15% of the total number of employees, which is higher than the standard set by the abovementioned rule.

**2. Optimizing the work environment for employees with disabilities**

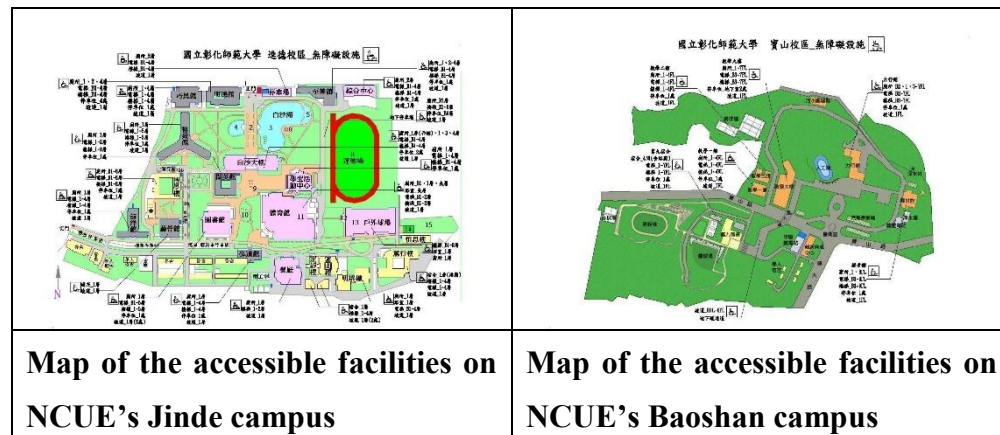
On behalf of hearing-impaired faculty members, NCUE applied to the Changhua County Government to implemented the Job Accommodation for People with Disabilities plan. After receiving a total of 118,000 NTD, hearing-impaired faculty members can now enjoy transcription services (108 hours in total, with 500 NTD/hour compensation subsidized, totaling 54,000 NTD) and assistance from helpers in the workplace (400 hours in total, with 160 NTD/hour compensation subsidized, totaling 64,000 NTD).

### 3. A campus environment with accessible facilities for employees with disabilities

NCUE places considerable emphasis on building a campus environment with accessible facilities. The buildings and campus facilities are inspected and improved in accordance with accessibility regulations, while millions of NTD are spent on improving the accessible facilities every year. The total amount spent on the improvement of accessible facilities has reached 97.93 million NTD, providing consummate accessible facilities on campus. There are 23 major buildings on campus, each of which is equipped with accessible elevators and accessible toilets, with a 100% installation rate. All accessible ramps, guide facilities, and accessible stairway hand railings in the buildings are set according to accessibility regulations.

Table: Accessible facilities available on campus

Accessible Facility	Quantity	Installation Rate
Accessible elevator	23	100%
Accessible toilet	61	100%
Renovated accessible ramp	19	100%
Accessible stairway hand railing	36	100%
Guide facility	26	100%



#### **4. Employees with disabilities are given the first priority for accommodation**

Under the suitable accommodation policy of NCUE, faculty members and staff can enjoy the right to use suites for people with disabilities in the university dormitory. On the first floors of the Zhong and Xiao Buildings of the university's dormitories (single room), suites with a bedroom and toilet with accessible bathroom facilities are available for qualified faculty members and staff to use.



## 10.6.1

### **Non-discriminatory admissions policy**

The admission policy of NCUE is not discriminatory, and all admission matters are handled in accordance with the principles of fairness, justice, and openness. We also have various admission policies for disadvantaged groups. In accordance with Article 24 of the 'University Act' and Article 19 of its implementation rules and the 'Key Points on the Review and Approval Procedures of the University Admission Rules', NCUE has formulated the 'Regulations on Transfer and Admission to Doctoral, Master's, and Bachelor's Programmes'. The admission guides have no restrictions on gender or students with disabilities, and no discriminatory conditions.

NCUE's 'Regulations on Transfer and Admission to Doctoral, Master's, and Bachelor's Programmes' was originally called 'Regulations on Admission to Graduate Schools and Transfer to Bachelor Programmes'. The name and content of the regulations were revised on 3 December 2014, 18 March 2015, and 31 May 2017, and approved by the Ministry of Education with the letter Tai-Chiao-Kao (IV) Tzu No. 1040045228 issued on 13 April 2015 and the letter Tai-Chiao-Kao (IV) Tzu No. 1060081175 issued on 14 June 2017.

Please refer to [Annex 10.6.1A](#), Key Points on the Review and Approval Procedures of the University Admission Rules.

Please refer to [Annex 10.6.1B](#), The university's Regulations on Transfer and Admission to Doctoral, Master's, and Bachelor's Programmes.

## 10.6.2

### Access to university track underrepresented groups applications

#### 1. Statistics of NCUE's disadvantaged students, 2021

To compensate for the underrepresentation of students due to their backgrounds, NCUE is eager to recruit disadvantaged students, including those with disabilities, indigenous students, as well as economically or culturally disadvantaged students. The statistics on these students in 2021 are as follows:

Table: Statistics on NCUE's disadvantaged students, 2021

Category	Bachelor's program	Master's program	Doctoral program
Disabilities	78	22	3
Indigenous	108	15	1
Low-income households	61	10	0
Low- to middle-income households	75	11	1
Grants for disadvantaged students (levels 1–5)	178	55	0
Children of military and civil servants	8	2	1
Children of families in hardship	15	4	0

New immigrants	192	19	1
Total	715	138	7

## 2. Admission of underrepresented groups to NCUE in 2021

To achieve the goal of sustainable development on the basis of equality, to eliminate or reduce all inequalities, ensure the education rights of poor and disadvantaged groups, improve the admission opportunities of disadvantaged students, and effectively promote the mobility of social classes so as to achieve the measures of a social protection system, NCUE provides various admission channels and welcomes disadvantaged students (such as indigenous people, students with disabilities, and economically disadvantaged students) to enrol. The admission situation of each channel is as follows:

### 1. Statistics on the admission of disadvantaged students through various channels in 2021.

Name of admission channel	Admission quota	Number of applicants	Number of students admitted
University admission of individual applicants in 2021—priority admission (economically disadvantaged students)	9	4	One were admitted on priority, two were admitted, and one did not meet the minimum admission criteria
University admission of individual applicants in 2021—Yang-ying Admission Section (economically disadvantaged students)	23	69	19
University admission of individual applicants in 2021—	73	67	29

additional quota for indigenous students			
The 2021 separate admission examination for the Bachelor's programme for students with disabilities	7	51	7
The 2021 college and university screening test for students with disabilities (by placement)	19	-	10
Students with disabilities admitted through general admission channels in 2021	There was no specific quota		5 (1 individual applicant and 4 admitted by placement through university examination)

Table: Statistics on the admission of students with special talents to NCUE in 2021

Approach through which the student is admitted	Quota of recruitment	Number of students admitted
2021 Athletic performance screening	71	7

**2. The application status of foreign students with NCUE is as follows:**

Admission name	Number of applicants	Number of students admitted
----------------	----------------------	-----------------------------

Foreign student application for admission in 2021	55	32
Separate admission of overseas Chinese students and students from Hong Kong and Macao in 2021	122	38
Application by overseas Chinese students for graduate schools in 2021	79 masters students, 2 doctoral students	13masters students
Individual application by overseas Chinese students for bachelor's programmes in 2021	142	21
Admission of overseas Chinese students to bachelor's programmes by joint registration and placement in 2021	-	36
Joint admission of mainland Chinese students to the graduate school, 2021	1 doctoral student	2 doctoral students

## 10.6.3

### **Access to university underrepresented groups recruit**

To facilitate the enrolment of underrepresented groups, NCUE provides a sufficient number of admission or employment channels for students, faculty, and staff:

#### **A. Students:**

#### **1. NCUE provides opportunities for disadvantaged students (such as indigenous students, students with disabilities, and economically disadvantaged students).**

1.1 Encourage departments to actively provide quotas to increase the admission opportunities for disadvantaged students.

1.1.1. In recent years, NCUE has actively provided additional quota for indigenous people and students with disabilities to be admitted to NCUE through different channels.

1.1.2. In order to take care of disadvantaged students comprehensively, the admission threshold of the total scores for NCUE's 'individual application' has been lowered since 2018, and preferential admission has been provided for economically disadvantaged students.

1.1.3. In 2019, the Yang-ying Admission Section was added to the 'individual application' process of NCUE only for economically disadvantaged students to apply for the examination. It lowers the standards of examination and screening, and simplifies the screening test process to increase admission opportunities.

1.1.4. In order to encourage departments to actively provide additional quotas for disadvantaged students, NCUE's 'Measures for the Establishment and Promotion of the Admission Strategy Committee' stipulates that the actual total registered number of additional quotas (including overseas students, students with disabilities, and indigenous students) of various programmes in a department in the current academic year will be multiplied by NTD 5,000 as additional affair expenses for the department.

- Please refer to [Annex 10.6.3A](#), 'Measures for the Establishment and Promotion of the Admission Strategy Committee'.

1.2 Reduce the burden for disadvantaged students—waive the registration fee as well as subsidise the transportation and accommodation expenses for 'individual application'.

1.2.1. NCUE will exempt economically disadvantaged students (low-income households and middle-to-low-income households) from the registration fee when they take our self-held admission examinations, such as the 'Second-stage Screening Test for Individual Application for Bachelor's Programmes', 'Transfer Examination for Bachelor's Programmes', 'Reference Screening Test and Admission Examination for Master's and Doctoral Programmes', and 'Separate Admission of Students with disabilities to Bachelor's Programmes'.

- Please refer to [Annex 10.6.3B](#), Department Rules of Admission Guide for Individual Application for University Admission in 2021.

- Please refer to [Annex 10.6.3C](#), NCUE’s 2021 Admission Guide for Separate Admission of Students with Disabilities.
- Please refer to [Annex 10.6.3D](#), Transfer Admission Examination Guide for Bachelor’s Programmes in 2021.
- Please refer to [Annex 10.6.3E](#), Guide on Reference to Master’s and Doctoral Programmes in 2021.
- Please refer to [Annex 10.6.3F](#), Admission Guide for Master’s Programmes in 2021.
- Please refer to [Annex 10.6.3G](#), Admission Guide for Doctoral Programmes in 2021.

1.2.2. During the second-stage screening test for ‘individual application’ and the ‘Admission Screening for 4-year Technological Undergraduate and 2-year Vocational Junior College Programmes’, the transportation and accommodation expenses required by the students will be subsidised according to their place of residence, and the departments will give the subsidies to the qualified candidates on the day of the screening test.

1.3 Implement projects such as the Higher Education Sprout Project and the Yang-ying Project to increase admission opportunities for disadvantaged students.

With the promotion of the Higher Education Sprout Project, NCUE has increased diversified admission opportunities for senior high school students year by year. This includes encouraging departments to actively provide quotas to increase admission opportunities for disadvantaged students, waiving registration fees, subsidising transportation and accommodation fees for ‘individual application’, and holding lectures in senior and vocational high schools (please refer to Appendix 10.6.3H).

NCUE continues to conduct the “Caring for Regional High Schools and Vocational High Schools” micro-course activities to attract more students who come from families in the lowest 20% income group in Taiwan to study at NCUE. As of the end of June 2022, 391 students from families in the lowest 20% income group are studying at NCUE, accounting for 5.5% of all students.



Students of the Taipei Municipal Chenggong High

School learning the experimental principle with ultraviolet light and photosensitive powder.

1.4 Subsidise disadvantaged students to enter university, and simultaneously, plan and improve the mechanism of schooling and study counselling to promote social class mobility.

In addition, in order to encourage economically disadvantaged students (children from low-income families, middle-to-low-income families, and families in special circumstances) to study hard and improve their chances of entering national universities, NCUE has planned a series of perfect schooling, study, and counselling mechanisms to enable students to exhibit their personal potential in National Changhua University of Education, in the hope of achieving the goal of increasing the number of economically disadvantaged students admitted annually.

In 2021, the departments provided 131 admission seats for economically disadvantaged students (children from low-income families, middle-to-low-income families, and families in special circumstances). A total of 191 students applied and 61 students were admitted. Please refer to Appendix 10.6.3H for relevant admission measures and achievements.

- Please refer to [Annex 10.6.3H](#), Admission Measures for Disadvantaged Students and Achievements in 2021.

## **2. Providing students with special talents with multiple admission approaches**

NCUE is open to students with outstanding athletic performance. Seven students were admitted to NCUE's Department of Sports through athletic performance screening, which offered 71 places.

### **B. Employee**

Having enacted the National Changhua University of Education Commitment of Sustainability, the university spares no effort to take care of employees with disabilities. To ensure inclusion and equity, NCUE abides by the rules stipulated by the *Employment Service Act*, *Gender Equity Education Act*, and *People with Disabilities Rights Protection Act*, ensures that no forms of discrimination or inequality due to race, belief, disability, and gender are allowed under the rules and regulations of the university, and ensures equal pay for faculty members. The number of employees with disabilities in NCUE conforms with the *People with Disabilities Rights Protection Act*. We continuously provide help in optimizing the work environment, and prioritize accommodating employees with disabilities so that they can have a safe and secure work environment.

### **1. NCUE provides adequate employment channels for the recruitment of faculty and staff from underrepresented groups, in accordance with regulations.**

1.1 Pursuant to Article 38 of the People with Disabilities Rights Protection Act:



Any given government department (agency/organisation) of individual levels, public school, or public business agency/organisation/institution whose total number of employees is no less than 34 shall employ people with disabilities with the capability to work, and the number of employees with disabilities shall be no less than 3% of the total number of employees. In 2021, NCUE had 816 employees, among whom 42 had disabilities, and the proportion of employees with disabilities was 5.15%, higher than the stipulated standard.

1.2 Pursuant to Article 4 of the Indigenous Peoples Employment Rights Protection Act: Among the total number of the following personnel hired by each level of government, public schools, and state-owned businesses, excluding those located outside Penghu, Jinmen, and Lianjiang County, there shall be 1 indigenous individual for every 100 workers: 1. Contract employee; 2. Stationed police; 3. Mechanic, driver, janitor, cleaner; 4. Fee administrator; 5. Non-technical workers not requiring the qualifications of civil servants. The total number of personnel listed in the preceding paragraph shall be one indigenous individual for every government agency, public school, and public institution at all levels with over 50 employees but less than 100 employees. **The total number of these five categories of staff employed by NCUE was 10 in 2021, so according to the above regulations, the employment of indigenous faculty or staff members was not required. However, in order to take care of disadvantaged groups, NCUE had employed two indigenous faculty and staff members, which was higher than the stipulated standard.**

Standard	Percentage (number) of employees from disadvantaged groups that should be employed by NCUE according to regulations	Actual percentage (number) of employees from disadvantaged groups	Total number of faculty and staff members in NCUE
People with Disabilities Rights Protection Act	Faculty and staff members with disabilities 3% (24 people)	Faculty and staff members with disabilities 5.15% (42 people)	The total number of faculty and staff members in NCUE was 816
Indigenous Peoples Employment Rights Protection Act	Indigenous faculty and staff members 0% (0 person)	Indigenous faculty and staff members 10% (2 people)	The total number of employees from the five categories was 10

- Please refer to Annex 10.6.3I, People with Disabilities Rights Protection Act.
- Please refer to Annex 10.6.3J, Indigenous Peoples Employment Rights Protection Act.

## **2. Supporting mechanism for employees with disabilities and indigenous employees:**

Applying to implement the Job Accommodation for People with Disabilities plan on behalf of the staff, prior allocation of dormitory rooms to employees with disabilities, and accessible facilities in dormitories.

### **2.1 On behalf of hearing-impaired faculty members, NCUE applied to the Changhua County Government and implemented the “Job**

**Accommodation for People with Disabilities” plan.** A total of 118,000 NTD was allocated to NCUE. The subsidized services and used amounts are as follows:

1. Transcription services: 108 hours in total, with 500 NTD/hour compensation subsidized, totaling 54,000 NTD.
2. Assistance from helpers in the workplace: 400 hours in total, with 160 NTD/hour compensation subsidized, totaling 64,000 NTD.

Please refer to Appendix 10.6.3K - Application documents submitted to Changhua County Government concerning job accommodation.

**2.2 Prior allocation of dormitory rooms to employees with disabilities** On the first floors of the Zhong and Xiao Buildings of the university’s dormitories (single room), suites with a bedroom and toilet with accessible bathroom facilities are available for qualified faculty members and staff to use.

## 10.6.4

### **Anti-discrimination policies**

NCUE has always attached importance to gender equality and devoted itself to the policy propaganda of anti-discrimination and anti-harassment in order to create a friendly campus. The relevant regulations and propaganda are as follows:

#### **1. Rules on the Prevention and Handling of Sexual Assault, Sexual Harassment, or Bullying on Campus**

According to the Ministry of Education's 'Regulations on the Prevention and Handling of Sexual Assault, Sexual Harassment, or Sexual Bullying on Campus', NCUE has formulated the 'Rules on the Prevention and Handling of Sexual Assault, Sexual Harassment, or Bullying on the Campus of National Changhua University of Education' to safeguard students' rights and interests in education and growth, and to provide learning and working environments in which NCUE's faculty and staff are free from sexual assault, sexual harassment, or sexual bullying.

- Please refer to [Appendix 10.6.4A](#), Rules on the Prevention and Handling of Sexual Assault, Sexual Harassment, or Bullying on the Campus of NCUE.
- Please refer to [Appendix 10.6.4B](#), Regulations on the Prevention and Handling of Sexual Assault, Sexual Harassment, or Sexual Bullying on the Campus of the Ministry of Education.

#### **2. Measures for the Prevention, Complaints, and Handling of Sexual Harassment**

In addition, in order to safeguard the working rights and interests of the faculty and staff, provide a working environment free from sexual harassment, as well as prevent and handle sexual harassment and protect the rights and interests of parties concerned, the 'Measures for the Prevention, Complaints, and Handling of Sexual Harassment' has been formulated. Its legal basis is the Ministry of Labour's 'Regulations for Establishing Measures of Prevention, Complaints, and Punishment of Sexual Harassment in the Workplace'.

- Please refer to [Appendix 10.6.4C](#), Measures for the Prevention, Complaints, and Handling of Sexual Harassment in NCUE.
- Please refer to [Appendix 10.6.4D](#), 'Regulations for Establishing Measures of Prevention, Complaints, and Punishment of Sexual Harassment in the Workplace' of the Ministry of Labour.
- Please refer to [Appendix 10.6.4E](#), Methods for announcing the 'Measures for the Prevention, Complaints, and Handling of Sexual Harassment' in NCUE and specific practices of prevention and control measures.

### 3. Cases of sexual assault, sexual harassment, or bullying on campus handled by NCUE in 2021

List of incidents of sexual assault, sexual harassment, or sexual bullying on campus handled by NCUE in 2021.

Category	Status of incidents	Quantity (cases)	True cases
Incidents in which the investigation procedure was executed after an application for investigation	Suspected sexual assault and sexual harassment case	4	4
Incidents not under the jurisdiction of NCUE	Suspected sexual harassment	5	3
Incidents for which no suspected victim or suspected culprit was found upon investigation	Suspected sexual harassment	3	0
Total		12 cases	7 cases

### 4. Holding related study activities

In 2021, NCUE held a total of 81 sessions of study activities related to gender equality education (anti-discrimination and anti-harassment), an increase of 15.7% from 70 sessions in 2020, to publicize the crucial ideas of gender equality education, anti-discrimination, and anti-harassment. A total of 4,295 people participated in these activities, an increase of 25.1% from 3,433 in 2021.

Professor Yi-Han Wang of NCUE’s Department of Guidance and Counseling was invited to lead the screening and sharing of the movie “Kim Ji-young: Born 1982” on May 6, 2021. The living situation of a South Korean woman “Kim Ji-young” served as an inspiration in the discussion of women’s rights, gender discrimination, and sexual harassment. The movie echoes the content of the United Nations *Convention on the Elimination of all Forms of Discrimination Against Women (CEDAW)*, aiming to examine the issues of women’s rights, gender discrimination, and sexual harassment. NCUE faculty

members, staff, and students participated enthusiastically in the event, and a total of 129 people showed up. On May 19, 2021, in the online event “LGBT People Should Have the Right to Walk in the Daylight: A Brief Talk About LGBT Literature and Movies in Taiwan,” writer Hikaru Lee analyzed the discrimination and harassment faced by LGBT people in their daily lives from the perspectives of LGBT literature and movies in Taiwan, and discussed ways to cope and improve. NCUE faculty members, staff, and students participated enthusiastically in the event, and a total of 150 people showed up.



- Please refer to [Appendix 10.6.4F](#), Statistics and records of study activities related to gender equality education (anti-discrimination and anti-harassment) in NCUE in 2021.

## 10.6.5

### University diversity officer

NCUE attaches importance to the participation of diverse members in handling various university affairs, attaches importance to gender equality in the composition of committees concerning the rights and interests of faculty and staff, and encourages students to participate in the decision-making and discussion of university affairs. In addition, a gender equality committee has been set up to integrate relevant resources to promote gender equality education, plan to establish a safe campus space with gender equality, etc. It is described as follows:

#### 1. Composition of committees related to the rights and interests of faculty and staff

Committees at the university level, such as the Teacher Appraisal Committee, the Evaluation Committee, the Performance Appraisal Committee, the Teachers' Complaints Review Committee, and the Principal Selection Committee, all meet the statutory requirement that the ratio of any gender should not be less than 1/3.

Committee name	Number of members	Male members	Female members
Teacher Appraisal Committee in 2021	33	22	11
Evaluation Committee in 2021	11	5	6
Performance Appraisal Committee in 2021	14	7	7
Teachers' Complaints Review Committee in 2021	13	7	6

#### 2. The formation of committees for the protection of the rights of multi-ethnic students

NCUE students come from diverse backgrounds. To protect underrepresented students' right to study, the Special Education Counseling and Guidance Committee was established at the Special Education Centre, while the Advisory Committee for the Resource Center of Indigenous Students was established at the Resource Center of Indigenous Students, so as to integrate the university's resources and provide students with services such as administrative support, learning guidance, and employment transition.

Please refer to Appendix 10.6.5A: *Fundamentals for Establishing the Advisory Committee for the Resource Center of Indigenous Students, National Changhua*

## *University of Education*

Please refer to Appendix 10.6.5B - *Measures for the Establishment of the Special Education Centre, National Changhua University of Education*

### **3. Encourage students to participate in university affairs**

NCUE encourages students to participate in university affairs. There are 14 meetings, including university affairs meetings, which invite students to make suggestions. In 2021, 39 meetings were held, and students actively participated in 39 of these meetings.

- Please refer to Annex 10.6.5C, Participation of student representatives in university affairs meetings in 2021.

### **4. NCUE has a Gender Equality Education Committee**

According to the Gender Equity Education Act of the Ministry of Education, NCUE has a Gender Equality Education Committee, whose task is to integrate relevant resources of all units of NCUE, draft the implementation plan of gender equality education, implement it, and examine the implementation results. Moreover, the committee has to plan or hold activities related to gender equality education for students, faculty, and staff, as well as parents; formulate regulations on the implementation of gender equality education as well as the prevention and handling of sexual assault and sexual harassment on campus, establish mechanisms, and coordinate and integrate relevant resources; and plan and establish a safe campus space with gender equality.

- Please refer to Annex 10.6.5D, Gender Equity Education Act of the Ministry of Education.
- Please refer to Annex 10.6.5E, Measures for Setting up the Gender Equality Education Committee of National Changhua University of Education.
- Please refer to Appendix 10.6.5F: Sexual equality activities conducted by the National Changhua University of Education

## 10.6.6

### Support for underrepresented groups

NCUE has provided guidance, consultation, or peer support programmes to support students, faculty, and staff from disadvantaged groups, as described below.

#### 1. Assistance programs offered to faculty members and staff:

Provide psychological counseling and physical health services.

1.1 NCUE conducts annual psychological counseling service activities which are a part of the assistance programs to protect the mental health of faculty members and staff. A feedback form is designed to collect the opinions of the applicants, which serves as a basis to decide how to improve and whether to conduct the activities again.

1.2 NCUE allocated a special fund of 150,000 NTD for the psychological counseling services provided in 2021, which served 114 person-times, helping a total of 18 employees.

※Appendix 10.6.6A - Service programs to protect the mental health of faculty members and staff, National Changhua University of Education

(Website: <https://personnel.ncue.edu.tw/files/11-1006-2513.php?Lang=zh-tw>)

#### 2. Services to support economically-disadvantaged students:

To help students study without worry, a plan to “replace part-time work with studying” was designed to guide economically-disadvantaged students so that they can strike a balance between their studies and economic needs. We support them from the first mile of studying at the university through the last mile, fulfilling the goal of “all-round care for students’ learning process,” helping them to “fly high in academic life, be an eagle to fulfill their dreams.” The learning process includes life guidance for studying with ease, professional care with psychological guidance, guidance on improving students’ autonomous learning, and career guidance on improving students’ abilities. In 2021, 2,113 person-times of economically-disadvantaged students at NCUE received this guidance.

The statistics for the distribution of Yang–ying program rewards of NCUE in 2021 are as follows:

2021	Daily life guidance	Psychological guidance	Learning guidance	Career guidance	Total
------	---------------------	------------------------	-------------------	-----------------	-------



Number of students served	445	385	1,154	129	2,113
Expenditures of rewards for students (NTD)	477,000	N/A	7,282,000	N/A	12,052,000

※Appendix 10.6.6B: Fundamentals for Yang–ying program rewards of the National Changhua University of Education

### 3. Services to support students with disabilities

A Resource Classroom has been set up in the Special Education Centre of NCUE. In order to provide students with disabilities with more appropriate consulting and evaluation services and help them successfully complete their studies and improve their emotional, learning, social, and professional adaptation, the ‘Resource Classroom’ of NCUE is specially designed to arrange counselling during the learning process, and its work includes general, life, and academic counselling.

Statistics of various on-site service items of the Resource Classroom	Number of students served
Data inquiry	129
Discussion report	15
Using aids	304
Printing homework	97
Self-study	4
Consultation	7
Examination service	146
Data conversion	110
Academic consultation	58
Life consultation	13

Schooling system transition consultation	139
Counselling consultation	129
Other	15

Types of services provided by the Resource Classroom	Number of students served
Schoolwork counselling	120
Examination service	14
Study companion service	856
Borrowing aids	23
Textbook conversion	7

#### 4. Support services for indigenous students

In order to effectively provide various types of assistance and services, such as life, schoolwork, and employment counselling for students from indigenous ethnic groups (hereinafter referred to as indigenous students), NCUE established the Indigenous Students Resource Centre in 2017, and organised the above service activities 19 times in 2021, and 529 students participated in them. The service description is as follows:

Item	Service	Students served (person-times)
Life services	Assistance with scholarship and grant applications	43
	Workshop for spiritual growth	13
	Joint orientation activity	71
	Farewell evening party	26

Coursework tutoring	Pre-exam reading club	61	
Employment guidance	CPAS talent tests	19	
	On-site services by career advisors	3	
	Employability training seminar	8	
	Financial management seminar	90	
Cultural empowerment	Visiting the Qingliu tribe	27	
	Visiting the Meixi tribe	16	
	Visiting Namasia district, Kaohsiung	20	
	Cultural seminar	85	
	Job's tears bead weaving	20	
	Tayal weaving course	12	
	Serving the tribal communities	15	
Total	15 sessions	529 person-times	



Website publication of information

Integration service of resources inside and outside the university: providing resources needed by indigenous students and integrating them on the website of the Indigenous Students Resource Centre.

<http://student.ncue.edu.tw/files/11-1017-2254-1.php?Lang=zh-tw>

- Please refer to Annex 10.6.6C, Key Points on Setting up the Indigenous Students Resource Centre.

## 5. Services of student unions and associations

5.1 The Student Union has the right to send representatives to attend school meetings and make suggestions on university affairs

A student union organisation has been set up to implement the idea of student autonomy, cultivate democratic accomplishment, and promote the communication of opinions on campus and the equality of student associations. Its task is to manage students' public affairs, participate in various activities on behalf of all members, plan and coordinate university-level activities internally, coordinate the fund usage and audit of the student union, and send representatives to participate in school meetings. The organisation has the right to make suggestions on university affairs, suggest issues that reflect the opinions of most students, protect students' rights and interests, and arbitrate student affairs.

Website  
of the  
Student



Union <https://ncuesa.ncue.edu.tw/>

Facebook fans page of the Student

Union <https://www.facebook.com/NCUESA>

Please refer to [Annex 10.6.6D](#), Articles of the Association of the Student Union of National Changhua University of Education.

#### 5.2 Student service associations provide social services

Student service associations in NCUE, such as the Rural Service Society, Mountainous Service Society, Education Promotion Service Society, Wangwang Society, Baisha Scout Society (Luofu Society), Tzu Chi Junior College Youth Society, Fishing Village Service Society, Bai Hai Yu Goodwill Ambassador Group, and Chong De Youth Society, not only routinely provide related social services on weekdays, but also hold social service activities, such as activities in mountainous areas, activities in rural areas, and education promotion activities every winter and summer vacation.

Students learn the importance of communication and interpersonal relationships by serving others. In 2021, 12 sessions of exchanges and interactions with elementary schools in the neighboring communities in the central region were conducted.

- Please refer to [Annex 10.6.6E](#), Number of service association participants.

## 10.6.7

### Accessible facilities

#### 1. The establishment of accessible facilities on our campus

NCUE attaches great importance to the environment of accessible facilities on campus. Buildings and campus facilities are inspected and improved according to laws and regulations on accessibility. Millions of new Taiwan dollars are spent every year to improve facilities in terms of accessibility. The total funds for improving accessible facilities amounts to NTD 97.9 million, and the accessible facilities on campus are nearly perfect. There are 23 main buildings on campus, and each building has been equipped with accessible elevators and toilets, with a setting rate of 100%. The accessible ramps, accessible guiding facilities, accessible stair handrails, and other facilities of the buildings comply with laws and regulations on accessibility.

Setting of accessible facilities in NCUE:

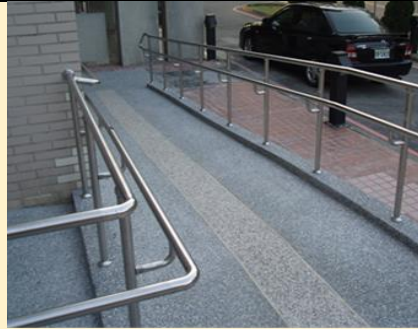
Name of accessible facility	Quantity	Set up rate
Accessible elevators	23	100%
Accessible toilets	61	100%
Ramps of accessible renovation project	19	100%
Accessible stair handrails	36	100%
Accessible guiding facilities	26	100%

※ **Appendix 10.6.7A: Map of the accessible facilities on the Jinde campus of the National Changhua University of Education**

※ **Appendix 10.6.7B: Map of the accessible facilities on the Baoshan campus of the National Changhua University of Education**



**Accessible stair handrail**



**Accessible ramp**



**Accessible elevator**



**Accessible toilet**

## **2. Accessible facilities in the dormitories of NCUE**

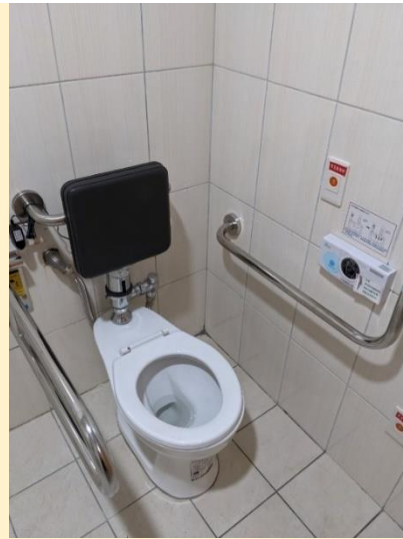
There are 7 student dormitories, including 31 accessible dormitory rooms, which can accommodate 68 students with disabilities.

Quantity statistics of accessible accommodations in the dormitories

Name of the dormitory	Number of rooms	Number of rooms for students with disabilities
3rd dormitory	77	3
5th dormitory	90	4
6th dormitory	63	1
7th dormitory	140	3
8th dormitory	179	6
9th dormitory	151	6
10th dormitory	187	8



**Accessible dormitory facilities**



**Accessible bathroom facilities in the bedroom**



## 10.6.8

### **Disability support services**

In order to help students with disabilities adapt to school life, NCUE provides support services in terms of schoolwork, life, and schooling system transition counselling, which are described as follows (please refer to the activity website of the Resource Classroom: <https://ncue7232105.wixsite.com/ncue/blank-7>) :

#### **1. Schoolwork support services**

##### 1.1 Individual remedial teaching (difficult subjects).

The Resource Classroom aims to help students with disabilities with difficult subjects, such as psychology and educational tests, English, and statistics, and arranges individual tutors for students to help them with their progress.

##### 1.2 Examination service measures (translation upon clicking, amplified examination questions, etc.)

The Resource Classroom has designed a 'Special Examination Service Form' to meet the needs of teachers and students and provide appropriate assistance according to the different types and degrees of students' disabilities.

##### 1.3 Work-study students and volunteers assist with learning (text-to-speech, audio recording, translation upon clicking, note taking, etc.)

The Resource Classroom arranges regular shifts of work-study students and volunteers to assist students with disabilities with text-to-speech, audio recording, note taking, and translation upon clicking. At the same time, specific work-study students are arranged to assist students with disabilities with searching for information, etc.

##### 1.4 Textbook conversion

Help to convert textbooks into braille or enlarged fonts, and convert written materials into electronic files.

##### 1.5 Provide relevant aids for borrowing

##### 1.6 Application for special education award scholarships (provided by the Academic Affairs Office), and application for scholarships from off-campus units

#### **2. Life support services**

##### 2.1 Orientation and mobility training

In order to help students with severe or total blindness familiarise themselves with the campus environment as soon as possible, Taiwan Foundation for the Blind is usually invited to assist with orientation and mobility training.

##### 2.2 Organise extracurricular activities and fellowship

To help students in special education become acquainted with, understand, and support each other, the Resource Classroom organises activities such as dinners, off-campus visits, and alumni experience sharing in public office examinations or teacher enrolment examinations for students at the beginning and end of each semester.

### 2.3 Hold student symposiums

In order to understand students' learning efficiency in the classroom and effectively assist with it, the Resource Classroom regularly holds symposiums between tutors and students to enable them to exchange views and provide timely assistance.

### 2.4 Psychological counselling (individual counselling, growth group)

In view of the personal troubles faced by students with disabilities, the Resource Classroom helps students refer to the Student Psychological Consulting and Counselling Centre of NCUE for individual consultation and participation in growth groups.

### 2.5 Assist in arranging accommodation and transportation on campus

### 2.6 Assist in improving the accessible environment

## 3. Support services for schooling system transition counselling

### 3.1 Student schooling system transition notification service

### 3.2 Notification and follow-up services for the schooling system transition of graduates

### Number of participants in various support services in 2021

Support service category	Number of participants
Schoolwork assistance service	1663
Life assistance service	331
Career and schooling system transition service	67
Consulting and counselling	124

### Statistics of support services by the Resource Classroom in 2021 for students with disabilities

Service activity name	Number of participants
Graduate farewell and schooling system transition survey dinner in 2021	42
Symposium for parents of freshmen in 2021	25

Symposium for experience sharing by alumni with disabilities returning to school in 2021	16
Caring for freshmen's campus life and learning adaptation activities in 2021	40
Extracurricular teaching and experiences in 2021	17
End-of-semester dinner and exchange activities in 2021	17

4. The activities related to the guidance services provided by the Resource Classroom are announced to all students with disabilities on a Facebook group, and the students are encouraged to participate actively.



## 10.6.9

### **Disability access scheme**

#### **1. Job accommodation plans for people with disabilities**

According to the job accommodation plans of the Workforce Development Agency, Ministry of Labor, ([https://jobacmd.wda.gov.tw/DJOB\\_WEB/](https://jobacmd.wda.gov.tw/DJOB_WEB/)), NCUE helps people with disabilities, middle-aged, and elderly people overcome work obstacles and improve their work efficiency so as to implement the goal of employment services. On behalf of the hearing-impaired faculty members, NCUE applied to the Changhua County Government and implemented the “Job Accommodation for People with Disabilities” plan, and a total amount of 118,000 NTD was allocated to NCUE. The subsidized services and used amounts are as follows:

1. Transcription services: 108 hours in total, with 500 NTD/hour compensation subsidized, totaling 54,000 NTD.
2. Assistance from helpers in the workplace: 400 hours in total, with 160 NTD/hour compensation subsidized, totaling 64,000 NTD.

#### **2. Service plans to help students in the Resource Classroom**

According to the Implementation Key Points on Recruiting and Counselling Students with Disabilities in Colleges and Universities Subsidised by the Ministry of Education (<https://edu.law.moe.gov.tw/LawContent.aspx?id=FL026216>), NCUE applies to the Ministry of Education every year for the subsidies of the work plan for recruiting and counselling students with disabilities in colleges and universities, and provides various forms of counselling and service work for students with disabilities. In 2021, the Ministry of Education subsidised more than NTD 2.39 million to help students with disabilities who have disability identification certificates adapt to university life, expand interpersonal relationships, and improve their learning ability in various subjects, to help them successfully complete their studies, as well as improve their emotional, learning, social, and professional adaptation. The support services provided are as follows (please refer to <https://ncue7232105.wixsite.com/ncue/blank-4>):

##### **1. Schoolwork support services**

###### **1.1 Individual remedial teaching (difficult subjects)**

The Resource Classroom aims to help students with disabilities with difficult subjects, such as psychology and educational tests, English, and statistics, and arranges individual tutors for students to help them with their progress.

###### **1.2 Examination service measures (translation upon clicking, amplified examination questions, etc.)**

The Resource Classroom has designed a 'Special Examination Service Form' to meet the needs of teachers and students and provide appropriate assistance according to the different types and degrees of students' disabilities.

### 1.3 Work-study students and volunteers assist with learning (text-to-speech, audio recording, translation upon clicking, note taking, etc.)

The Resource Classroom arranges regular shifts of work-study students and volunteers to assist students with disabilities with text-to-speech, audio recording, note taking, and translation upon clicking. At the same time, specific work-study students are arranged to assist students with disabilities with searching for information, etc.

### 1.4 Textbook conversion

Help to convert textbooks into braille or enlarged fonts, and convert written materials into electronic files.

### 1.5 Provide relevant aids for borrowing

### 1.6 Application for special education award scholarships (provided by the Academic Affairs Office), and application for scholarships from off-campus units

## **2. Life support services**

### 2.1 Orientation and mobility training

In order to help students with severe or total blindness familiarise themselves with the campus environment as soon as possible, Taiwan Foundation for the Blind is usually invited to assist with orientation and mobility training.

### 2.2 Organise extracurricular activities and fellowship

To help students in special education get acquainted with, understand, and support each other, the Resource Classroom organises activities such as dinners, off-campus visits, and alumni experience sharing in public office examinations or teacher enrolment examinations for students at the beginning and end of each semester.

### 2.3 Hold student symposiums

In order to understand students' learning efficiency in the classroom and effectively assist with it, the Resource Classroom regularly holds symposiums between tutors and students to enable them to exchange views and provide timely assistance.

### 2.4 Psychological counselling (individual counselling, growth group)

In view of the personal troubles faced by students with disabilities, the Resource Classroom helps students refer to the Student Psychological Consulting and Counselling Centre of NCUE for individual consultation and participation in growth groups.

### 2.5 Assist in arranging accommodation and transportation on campus

### 2.6 Assist in improving the accessible environment

### 3. Support services for schooling system transition counselling

3.1 Student schooling system transition notification service

3.2 Notification and follow-up services for schooling system transition of graduates

#### Number of participants in various support services in 2021

Support service category	Number of participants
Schoolwork assistance service	1663
Life assistance service	331
Career and schooling system transition service	67
Consulting and counselling	124

- Please refer to [Annex 10.6.9A](#), Implementation Key Points on Recruiting and Counselling Students with Disabilities in Colleges and Universities Subsidised by the Ministry of Education.
- Please refer to [Annex 10.6.9B](#), Statistics on Usage and Activity Holding of the Resource Classroom of National Changhua University of Education.

## 10.6.10

### **Disability accommodation policy**

#### **1. Protecting the rights of people with disabilities in the workplace**

The university has enacted the National Changhua University of Education Commitment of Sustainability to protect the rights of people with disabilities to enjoy equal and appropriate workplace conditions. In accordance with Article 38 of the *People with Disabilities Rights Protection Act*, NCUE employs 42 persons with disabilities, accounting for 5.15% of the total number of employees, which is higher than the 3% standard set by the rule.

Please refer to Appendix 10.6.10A: *People with Disabilities Rights Protection Act*

Please refer to Appendix 10.6.10B: *National Changhua University of Education Commitment of Sustainability*

#### **2. Accommodation regulations of NCUE**

NCUE provides appropriate accommodation policies. Students with disabilities enjoy a reduction in tuition and miscellaneous fees, as well as guaranteed accommodation, and accessible dormitories are arranged according to their physical and mental conditions, as follows:

##### **(1) Providing suites for faculty members and staff with disabilities**

On the first floors of the Zhong and Xiao Buildings of the university's dormitories (single room), suites with a bedroom and toilet with accessible bathroom facilities are available for qualified faculty members and staff to use.

※ Appendix 10.6.6C: Fundamentals for the Management of Dormitories of National Changhua University of Education

##### **(2) NCUE's rules for student accommodation**

There are six dormitories on our campus, which can accommodate up to 2,636 students. Every year, freshmen, students with disabilities, overseas Chinese and foreign students, public expense students, students from offshore islands, students with excellent sports performance, and disadvantaged indigenous students are guaranteed to be prioritised for accommodation. Students from low-to-middle-income families and low-income families are provided with free accommodation. The rest of the students draw lots for the allocation of beds, and the accommodation rate is as high as 95%. Students with disabilities are entitled to a reduction in tuition and miscellaneous fees as well as guaranteed accommodation. According to their physical and mental conditions, accessible dormitories are arranged for accommodation.

Accommodation statistics of disadvantaged students

<b>Disadvantaged students</b>	<b>Number of people</b>
Students with disabilities	33
Overseas Chinese and foreign students	83
Disadvantaged indigenous students	1
Students from low-income families (free accommodation)	42

Current quantitative statistics of accommodation for students with disabilities

Name of the dormitory	Number of rooms	Number of rooms for students with disabilities
3rd dormitory	77	3
5th dormitory	90	4
6th dormitory	63	1
7th dormitory	140	3
8th dormitory	179	6
9th dormitory	151	6
10th dormitory	187	8

- Please refer to [Annex 10.6.10D](#), Regulations on Application for Residence Allocation in the Student Dormitories of National Changhua University of Education.
- Please refer to [Annex 10.6.10E](#) Regulations on the Management of Student Dormitories in National Changhua University of Education.

### **3. Accommodation for foreign students is also guaranteed**

Along with the annual accommodation guarantee for foreign students, the accommodation fee for the first year is exempted. Graduate students who meet the eligibility criteria of the university's award points are exempted from accommodation fees for up to two years for master's degree programmes and for up to three years for doctoral degree programmes, effective February 2020.



Statistics on the accommodation of foreign students

Preferential treatment	Number of people
Free accommodation in the first year	15
Free accommodation in the second year	1
Free accommodation in the third year	4

**4. Operating funds allocated to guide students with disabilities**

According to the *Fundamentals for Subsidizing Universities and Colleges on Recruiting and Counselling Students with Disabilities* issued by the Ministry of Education (<https://edu.law.moe.gov.tw/LawContent.aspx?id=FL026216>), NCUE applies for an annual subsidy from the Ministry of Education provided by the *Work Plan of Recruiting and Guiding University and College Students with Disabilities* so as to provide various forms of counselling and services for students with disabilities. In 2021, the Ministry of Education subsidized more than 2.39 million NTD to help students with disabilities with verification reports adapt to university life, expand their networks, and increase their ability to study various courses, so that they can finish their studies successfully. The funds are also used to provide support services that enhance their adaptation to emotional issues, academic matters, society, and employment.